

YR 系列高压三相异步电动机

YR SERIES HIGH-VOLTAGE THREE PHASE INDUCTION MOTOR

机座号 355~630(6kV)
450~630(10kV)

功率 220~2500kW(6kV)
250~2000kW(10kV)

工作制 S1

绝缘等级 F

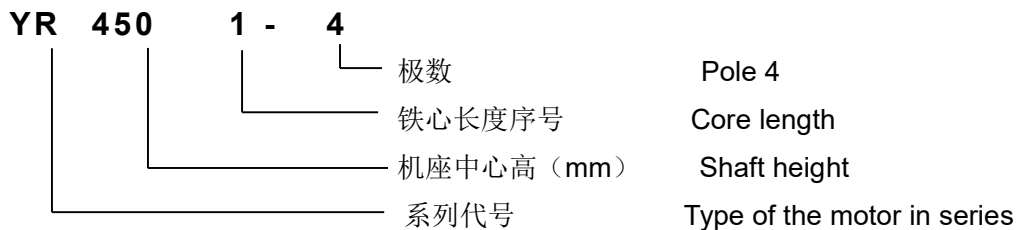
适用于: 驱动各种通用机械, 如通风机、压缩机、水泵、破碎机、切削机床、运输机械及其它机械设备等, 并可供矿山、机械工业、石油化工工业、发电厂等各种工矿企业作原动机用。

Applications: General purpose including compressor, water pump, crack machine, cut machine, transportation machine and other equipments. It is also used as the primitive drive for the mine mechanical industry, petroleum & chemistry industry, power plant and so on.

特点: 电机造型采用钢板焊接成箱式结构, 重量轻、刚度好; 顶部带安装防护顶罩, 拆卸方便, 便于维修; 定子采用压装结构, 定子绕组 F 级绝缘、VPI 浸漆, 绝缘性能优良可靠、机械强度高、防潮能力强; 防护等级为 IP23, 可按要求制成 IP44 等级。

Features: the motor has the box-type construction, which was made up of steel plate welded with each other, lightweight and good stiffness. On top of the motor is the protective cover, convenient to maintenance and replacement. The stator adopts the press construction; the winding with class F insulation and VPI impregnating, which ensure the reliable of the insulation, the mechanical stress and the capable of resistant humidity. The basical protection class is IP23; IP44 motor can be supplied according to requirement.

电动机型号说明 Designations of types



性能数据 Performance Data

6kV 50Hz

型号 Type	额定功率 Rated output kW	定子电流 Stator current A	额定负载下 At rated load			转子电压 Rotor voltage V	转子电流 Rotor current A	最大转矩 额定转矩 (标准值) Breakdown torque Rated torque (Standard value)	重量 Net Wgt. (Kg)
			效率 Eff. %	功率因数 Power Factor cos Φ	转速 (r/min)				
YR3551-4	220	260	92.7	0.83	1475	286	463	1.8	2450
YR3552-4	250	30	93.0	0.84	1475	317	474	1.8	2550
YR3553-4	280	33	93.1	0.84	1475	343	491	1.8	2600

性能数据 Performance Data

6KV 50Hz

型号 Type	额定功率 Rated output kW	定子电流 Stator current A	额定负载下 At rated load			转子电压 Rotor voltage V	转子电流 Rotor current A	最大转矩 额定转矩 (标准值) Breakdown torque Rated torque (Standard value)	重量 Net Wgt. (Kg)
			效率 Eff. %	功率因数 Power Factor cosΦ	转速 (r/min)				
YR4001-4	315	37	93.2	0.85	1480	345	549	1.8	2700
YR4002-4	355	41	93.3	0.85	1480	374	570	1.8	2750
YR4003-4	400	46	93.5	0.85	1480	407	587	1.8	2830
YR4004-4	450	52	93.7	0.85	1480	450	596	1.8	2960
YR4005-4	500	57	93.9	0.85	1480	500	599	1.8	3065
YR4501-4	560	64	94.2	0.85	1480	516	646	1.8	3790
YR4502-4	630	72	94.5	0.86	1480	566	664	1.8	3880
YR4503-4	710	81	94.6	0.86	1480	603	702	1.8	3950
YR4504-4	800	90	94.7	0.87	1480	646	738	1.8	4090
YR5001-4	900	100	94.8	0.87	1480	982	544	1.8	4993
YR5002-4	1000	111	94.9	0.87	1480	1058	561	1.8	5096
YR5003-4	1120	124	95.0	0.87	1480	1148	579	1.8	5296
YR5004-4	1250	138	95.1	0.87	1480	1254	592	1.8	5497
YR5601-4	1400	154	95.2	0.87	1500	1172	729	1.8	7800
YR5602-4	1600	176	95.3	0.87	1500	1279	764	1.8	8200
YR5603-4	1800	198	95.4	0.87	1500	1408	779	1.8	8600
YR6301-4	2000	220	95.5	0.87	1500	1408	865	1.8	8970
YR6302-4	2240	246	95.6	0.87	1500	1564	869	1.8	9310
YR6303-4	2500	273	95.7	0.87	1500	1765	859	1.8	9900
YR4001-6	220	27	92.5	0.81	980	282	470	1.8	2630
YR4002-6	250	30	92.7	0.82	980	301	499	1.8	2710
YR4003-6	280	34	92.8	0.82	980	326	518	1.8	2775
YR4004-6	315	38	93.0	0.82	980	352	537	1.8	2825
YR4005-6	355	43	93.2	0.82	980	384	554	1.8	2940
YR4501-6	400	48	93.5	0.83	985	404	594	1.8	3640
YR4502-6	450	54	93.6	0.84	985	424	635	1.8	3670
YR4503-6	500	59	93.8	0.84	985	473	633	1.8	3800
YR4504-6	560	66	94.0	0.84	985	516	674	1.8	3940
YR5001-6	630	73	94.3	0.81	990	902	416	1.8	4894
YR5002-6	710	82	94.5	0.81	990	932	454	1.8	4981
YR5003-6	800	92	94.7	0.81	990	1027	464	1.8	5205
YR5004-6	900	104	94.8	0.81	990	1157	463	1.8	5409
YR5601-6	1000	114	95.0	0.85	1000	1137	539	1.8	7200
YR5602-6	1120	127	95.1	0.85	1000	1233	557	1.8	7410
YR5603-6	1250	141	95.2	0.85	1000	1345	569	1.8	7620
YR6301-6	1400	159	95.3	0.85	1000	1346	635	1.8	8400

性能数据 Performance Data

6kV 50Hz

型号 Type	额定功率 Rated output kW	定子电流 Stator current A	额定负载下 At rated load			转子电压 Rotor voltage V	转子电流 Rotor current A	最大转矩 额定转矩 (标准值) Breakdown torque Rated torque (Standard value)	重量 Net Wgt. (Kg)
			效率 Eff. %	功率因数 Power Factor cos Φ	转速 (r/min)				
YR6302-6	1600	181	95.4	0.85	1000	1481	659	1.8	8680
YR6303-6	1800	202	95.5	0.85	1000	1651	666	1.8	9200
YR4003-8	220	29	92.2	0.78	735	393	337	1.8	2665
YR4004-8	250	32	92.3	0.78	735	417	360	1.8	2725
YR4005-8	280	36	92.5	0.79	735	447	337	1.8	2780
YR4501-8	315	40	92.6	0.80	735	565	335	1.8	3520
YR4502-8	355	44	92.7	0.80	735	611	348	1.8	3620
YR4503-8	400	50	93.0	0.80	735	667	359	1.8	3745
YR4504-8	450	56	93.2	0.81	735	734	366	1.8	3880
YR5001-8	500	61	93.5	0.81	740	698	428	1.8	4690
YR5002-8	560	68	93.7	0.81	740	769	435	1.8	4855
YR5003-8	630	75	93.9	0.81	740	812	464	1.8	5051
YR5004-8	710	85	94.0	0.81	740	918	462	1.8	5229
YR5601-8	800	97	94.2	0.81	750	1020	483	1.8	7400
YR5602-8	900	108	94.3	0.81	750	1094	508	1.8	7800
YR5603-8	1000	119	94.4	0.81	750	1179	525	1.8	8200
YR6301-8	1120	135	94.5	0.81	750	1177	585	1.8	7285
YR6302-8	1250	149	94.6	0.81	750	1274	603	1.8	8580
YR6303-8	1400	167	94.7	0.81	750	1392	618	1.8	8980
YR6304-8	1600	191	94.8	0.81	600	1531	642	1.8	9240
YR4501-10	220	29	91.3	0.77	585	516	258	1.8	3475
YR4502-10	250	32	90.5	0.77	585	554	272	1.8	3540
YR4503-10	280	36	91.8	0.78	585	601	281	1.8	3610
YR4504-10	315	41	91.9	0.78	585	656	289	1.8	3685
YR4505-10	355	46	92.1	0.78	585	722	296	1.8	3790
YR5001-10	400	51	92.8	0.78	590	689	348	1.8	4657
YR5002-10	450	56	93.1	0.78	590	760	356	1.8	4758
YR5003-10	500	63	93.3	0.79	590	847	354	1.8	4924
YR5004-10	560	69	93.5	0.79	590	908	370	1.8	5088
YR5601-10	630	81	93.6	0.80	600	945	412	1.8	8000
YR5602-10	710	90	93.7	0.80	600	1020	432	1.8	8600
YR5603-10	800	101	93.8	0.80	600	1105	450	1.8	9200
YR6301-10	900	110	93.9	0.80	600	1270	439	1.8	8120
YR6302-10	1000	123	94.1	0.80	600	1384	447	1.8	8355
YR6303-10	1120	139	94.2	0.80	600	1522	455	1.8	8880
YR6304-10	1250	153	94.3	0.80	500	1694	455	1.8	9327

性能数据 Performance Data

6kV 50Hz

型号 Type	额定功率 Rated output kW	定子电流 Stator current A	额定负载下 At rated load			转子电压 Rotor voltage V	转子电流 Rotor current A	最大转矩 额定转矩 (标准值) Breakdown torque Rated torque (Standard value)	重量 Net Wgt. (Kg)
			效率 Eff. %	功率因数 Power Factor cos Φ	转速 (r/min)				
YR4504-12	220	31	90.4	0.72	485	488	273	1.8	3655
YR4505-12	250	35	91.5	0.72	485	526	287	1.8	3770
YR5001-12	280	38	91.7	0.73	490	514	328	1.8	4594
YR5002-12	315	42	92.0	0.74	490	556	342	1.8	4728
YR5003-12	355	47	92.1	0.75	490	604	354	1.8	4896
YR5004-12	400	52	92.3	0.75	490	665	363	1.8	5092
YR5005-12	450	59	92.5	0.77	490	741	366	1.8	5284
YR5601-12	500	66	92.7	0.77	500	824	381	1.8	8100
YR5602-12	560	73	92.8	0.77	500	878	403	1.8	8700
YR5603-12	630	82	92.9	0.77	500	937	427	1.8	9300
YR6301-12	710	94	93.0	0.77	500	1167	377	1.8	8137
YR6302-12	800	105	93.1	0.77	500	1257	395	1.8	8387
YR6303-12	900	117	93.2	0.77	500	1363	411	1.8	8630
YR6304-12	1000	128	93.3	0.77	500	1490	419	1.8	9100

性能数据 Performance Data

10kV 50Hz

型号 Type	额定功率 Rated output kW	定子电流 Stator current A	额定负载下 At rated load		同步转速 Synchronous speed (r/min)	最大转矩 额定转矩 (标准值) Breakdown torque Rated torque (Standard value)
			效率 Eff. %	功率因数 Power Factor cos Φ		
YR4501-4	315	24	92.5	0.84	1500	1.8
YR4502-4	355	27	92.8	0.84	1500	1.8
YR4503-4	400	30	93.1	0.85	1500	1.8
YR4504-4	450	33	93.3	0.85	1500	1.8
YR4505-4	500	37	93.6	0.85	1500	1.8
YR4506-4	560	41	93.8	0.85	1500	1.8
YR5001-4	630	46	94.2	0.85	1500	1.8
YR5002-4	710	51	94.6	0.85	1500	1.8
YR5003-4	800	57	94.7	0.86	1500	1.8
YR5004-4	900	64	94.8	0.86	1500	1.8
YR5005-4	1000	71	94.9	0.86	1500	1.8
YR5601-4	1120	79	95.1	0.87	1500	1.8
YR5602-4	1250	88	95.2	0.87	1500	1.8
YR5603-4	1400	98	95.3	0.87	1500	1.8
YR6301-4	1600	111	95.4	0.88	1500	1.8

YR6302-4	1800	124	95.5	0.88	1500	1.8
----------	------	-----	------	------	------	-----

性能数据 Performance Data

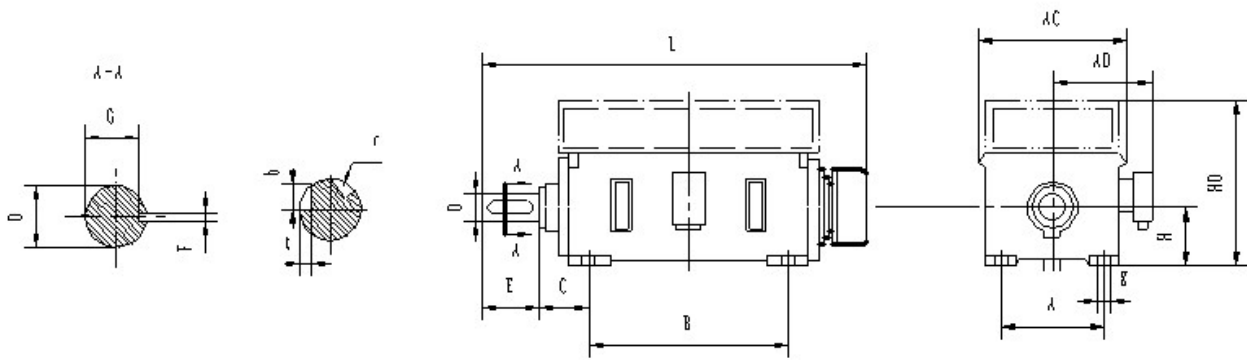
10kV 50Hz

型号 Type	额定功率 Rated output kW	定子电流 Stator current A	额定负载下 At rated load		同步转速 Synchronous speed (r/min)	最大转矩 额定转矩 (标准值) Breakdown torque Rated torque (Standard value)
			效率 Eff. %	功率因数 Power Factor cos Φ		
YR6303-4	2000	138	95.6	0.88	1500	1.8
YR4503-6	280	22	92.2	0.81	1000	1.8
YR4504-6	315	25	92.4	0.81	1000	1.8
YR4505-6	355	28	92.6	0.81	1000	1.8
YR4506-6	400	31	92.8	0.81	1000	1.8
YR5001-6	450	35	93.1	0.81	1000	1.8
YR5002-6	500	39	93.4	0.81	1000	1.8
YR5003-6	560	43	93.6	0.81	1000	1.8
YR5004-6	630	48	93.8	0.82	1000	1.8
YR5005-6	710	54	94.0	0.82	1000	1.8
YR5601-6	800	59	94.3	0.84	1000	1.8
YR5602-6	900	66	94.5	0.84	1000	1.8
YR5603-6	1000	72	94.7	0.85	1000	1.8
YR5604-6	1120	81	94.9	0.85	1000	1.8
YR6301-6	1250	90	95.1	0.85	1000	1.8
YR6302-6	1400	100	95.3	0.85	1000	1.8
YR6303-6	1600	114	95.4	0.85	1000	1.8
YR5001-8	280	24	92.2	0.75	750	1.8
YR5002-8	315	27	92.3	0.75	750	1.8
YR5003-8	355	30	92.5	0.75	750	1.8
YR5004-8	400	34	92.8	0.75	750	1.8
YR5005-8	450	37	93.1	0.77	750	1.8
YR5006-8	500	41	93.3	0.77	750	1.8
YR5601-8	560	44	93.6	0.79	750	1.8
YR5602-8	630	50	93.8	0.79	750	1.8
YR5603-8	710	56	94.0	0.79	750	1.8
YR5604-8	800	63	94.2	0.79	750	1.8
YR6301-8	900	68	94.4	0.82	750	1.8
YR6302-8	1000	75	94.6	0.82	750	1.8
YR6303-8	1120	84	94.8	0.82	750	1.8
YR5003-10	250	22	91.4	0.72	600	1.8
YR5004-10	280	25	91.7	0.72	600	1.8
YR5005-10	315	28	92.1	0.72	600	1.8
YR5006-10	355	31	92.2	0.72	600	1.8
YR5601-10	400	34	92.4	0.74	600	1.8
YR5602-10	450	38	92.8	0.75	600	1.8

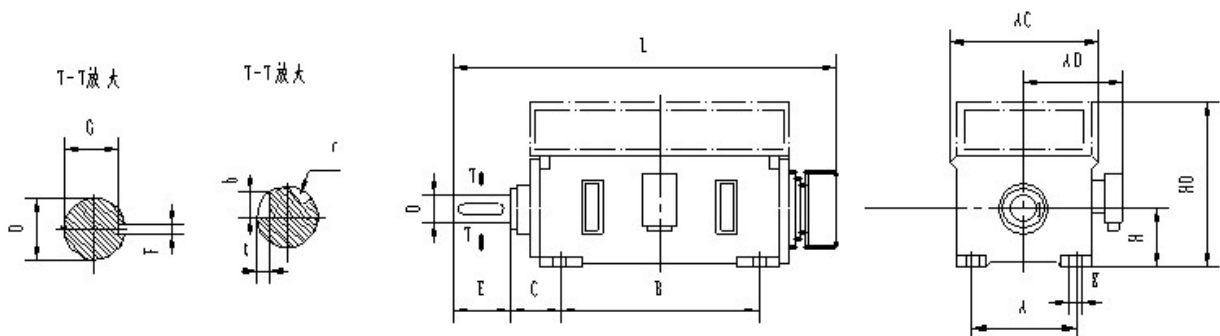
性能数据 Performance Data

10kV 50Hz

型号 Type	额定功率 Rated output kW	定子电流 Stator current A	额定负载下 At rated load		同步转速 Synchronous speed (r/min)	最大转矩 额定转矩 (标准值) Breakdown torque Rated torque (Standard value)
			效率 Eff. %	功率因数 Power Factor cosΦ		
YR5603-10	500	42	93.0	0.75	600	1.8
YR5604-10	560	46	93.2	0.76	600	1.8
YR5605-10	630	52	93.4	0.76	600	1.8
YR6301-10	710	57	93.7	0.78	600	1.8
YR6302-10	800	64	93.8	0.78	600	1.8
YR6303-10	900	71	93.9	0.78	600	1.8
YR6304-10	1000	79	94.1	0.78	600	1.8
YR5601-12	280	25	91.4	0.72	500	1.8
YR5602-12	315	28	91.5	0.72	500	1.8
YR5603-12	355	32	91.6	0.72	500	1.8
YR5604-12	400	35	91.8	0.72	500	1.8
YR5605-12	450	40	92.2	0.72	500	1.8
YR6301-12	500	43	92.4	0.73	500	1.8
YR6302-12	560	48	92.8	0.74	500	1.8
YR6303-12	630	53	93.1	0.74	500	1.8
YR6304-12	710	60	93.4	0.74	500	1.8



YR (6KV)



YR (10KV)

6kV 电机外形及安装尺寸 Dimensions

mm

机座 Frame	极数 Poles	安装尺寸 Mounting Dimension											外形尺寸 (限值) Outline Dimension (Maximum)					
		A	B	C	D	E	F	G	t	b	r		H	K	AC	AD	HD	L
											最小尺寸 Min	最大尺寸 Max						
355	4	630±1.4	900±1.4	315±4	100 ^{+0.035} _{+0.013}	210±0.57	28 ⁰ _{-0.052}	90 ⁰⁻ _{0.2}					355 ⁰⁻ _{1.0}	28 ^{+0.52} ₀	1100	800	1170	2400
400	4-8	710±1.75	1000±1.75	335±4	110 ^{+0.035} _{+0.013}	210±0.57	28 ⁰ _{-0.052}	100 ⁰⁻ _{0.2}					400 ⁰⁻ _{1.0}	35 ^{+0.62} ₀	1150	850	1330	2420
450	4	800±1.75	1120±1.75	355±4	120 ^{+0.035} _{+0.013}	210±0.57	32 ⁰ _{-0.062}	109 ⁰⁻ _{0.2}					450 ⁰⁻ _{1.0}	35 ^{+0.62} ₀	1300	900	1475	2640
	6-12				130 ^{+0.040} _{+0.015}			250±0.57	119 ⁰⁻ _{0.2}									
500	4	900±2.1	1250±2.1	475±4	130 ^{+0.040} _{+0.015}	250±0.57	32 ⁰ _{-0.052}	119 ⁰⁻ _{0.2}					500 ⁰⁻ _{1.0}	42 ^{+0.62} ₀	1420	965	1655	2920
	6-12				140 ^{+0.040} _{+0.015}			36 ⁰ _{-0.062}	128 ⁰⁻ _{0.3}									
560	4	1000±2.1	1400±2.1 (1600±2.1)	500±4	150 ^{+0.040} _{+0.015}	250±0.57	-	-	11.4 ^{+0.2} ₀	39.7	0.7	1.0	560 ⁰⁻ _{1.0}	42 ^{+0.62} ₀	1600	1100	1850	3200
	6-12				160 ^{+0.040} _{+0.015}				300±0.65	-	-	12.4 ^{+0.3} ₀						
630	4	1120±2.1	1600±2.1 (1800±2.1)	530±4	170 ^{+0.040} _{+0.015}	300±0.65	-	-	12.4 ^{+0.3} ₀	44.2	0.7	1.0	630 ⁰⁻ _{1.0}	48 ^{+0.62} ₀	1800	1200	2050	3460
	6-12				180 ^{+0.040} _{+0.015}				-	-	12.4 ^{+0.3} ₀	45.6						

注：1、1400 为集电环置于轴承外侧时的数值；1600 为集电环置于轴承内侧时的数值。

1400 is the dimension when the slip ring located at the outer side of the bearing. And 1600 is the dimension when the slip ring located at the inner side of the bearing.

2、1600 为集电环置于轴承外侧时的数值；1800 为集电环置于轴承内侧时的数值。

1600 is the dimension when the slip ring located at the outer side of the bearing. And 1800 is the dimension when the slip ring located at the inner side of the bearing.

3、当采用滑动轴承时，尺寸偏差包括轴向窜动量。

The dimensions not include the axial play when the motor has the sleeve bearing.

4、样本数据仅供参考，如有更改恕不另行通知。

All data subject to change without notice, use only certified data for construction purchases.

10kV 电机外形及安装尺寸 Dimensions

mm

机座号 Frame	极数 Poles	安装尺寸 Mounting Dimension											外形尺寸 Outline Dimension					
		A	B	C	D	E	F	G	f	b	r		H	K	AC	AD	HD	L
											最小尺寸 Min	最大尺寸 Max						
450	4	800±1.75	1120±1.75	355±4	110 ^{+0.035} _{+0.013}	210±0.57	28 ⁰⁻ _{0.052}	100 ⁰⁻ _{0.2}	-	-	-	-	450 ⁰⁻ _{1.0}	35 ^{+0.62} ₀	1300	1050	1475	2740
	6																	
500	4	900±1.75	1250±2.1	475±4	120 ^{+0.035} _{+0.013}	210±0.57	32 ⁰⁻ _{0.062}	109 ⁰⁻ _{0.2}	-	-	-	-	500 ⁰⁻ _{1.0}	42 ^{+0.62} ₀	1420	1110	1700	3020
	6~10				130 ^{+0.040} _{+0.015}			250±0.57										
560	4	1000±2.1	1400±2.1 (1600±2.1)	500±4	150 ^{+0.040} _{+0.015}	250±0.57	-	-	11.4 ^{+0.2} ₀	39.7	0.7	1.0	560 ⁰⁻ _{1.0}	42 ^{+0.62} ₀	1600	1100	1850	3200
	6~12				160 ^{+0.040} _{+0.015}				300±0.65									
630	4	1120±2.1	1600±2.1 (1800±2.1)	530±4	170 ^{+0.040} _{+0.015}	300±0.65	-	-	12.4 ^{+0.3} ₀	44.2	0.7	1.0	630 ⁰⁻ _{1.0}	48 ^{+0.62} ₀	1800	1300	2050	3800
	6~12				180 ^{+0.040} _{+0.015}					45.6								

注：1、1400 为集电环置于轴承外侧时的数值；1600 为集电环置于轴承内侧时的数值。

1400 is the dimension when the slip ring located at the outer side of the bearing. And 1600 is the dimension when the slip ring located at the inner side of the bearing.

2、1600 为集电环置于轴承外侧时的数值；1800 为集电环置于轴承内侧时的数值。

1600 is the dimension when the slip ring located at the outer side of the bearing. And 1800 is the dimension when the slip ring located at the inner side of the bearing.

3、当采用滑动轴承时，尺寸偏差不包括轴向窜动量。

The dimensions not include the axial play when the motor has the sleeve bearing.

4、样本数据仅供参考，如有更改恕不另行通知。

All data subject to change without notice, use only certified data for construction purchases.